

BEAR CREEK OHV TRAIL BASEMAP FOR GARMIN

(disclaimer- this is a homemade product that has no reports of problems but is offered as a "Use at your own risk" map)

Note- this basemap only has the current trails on it, with the exception of a couple of Trail 3, 4, 442 tracks that I believe may be finished this season.

The basemap is, unfortunately, not a self-executable file and requires use of 2 free programs to upload the map to your Mapsource program.

Requirements:

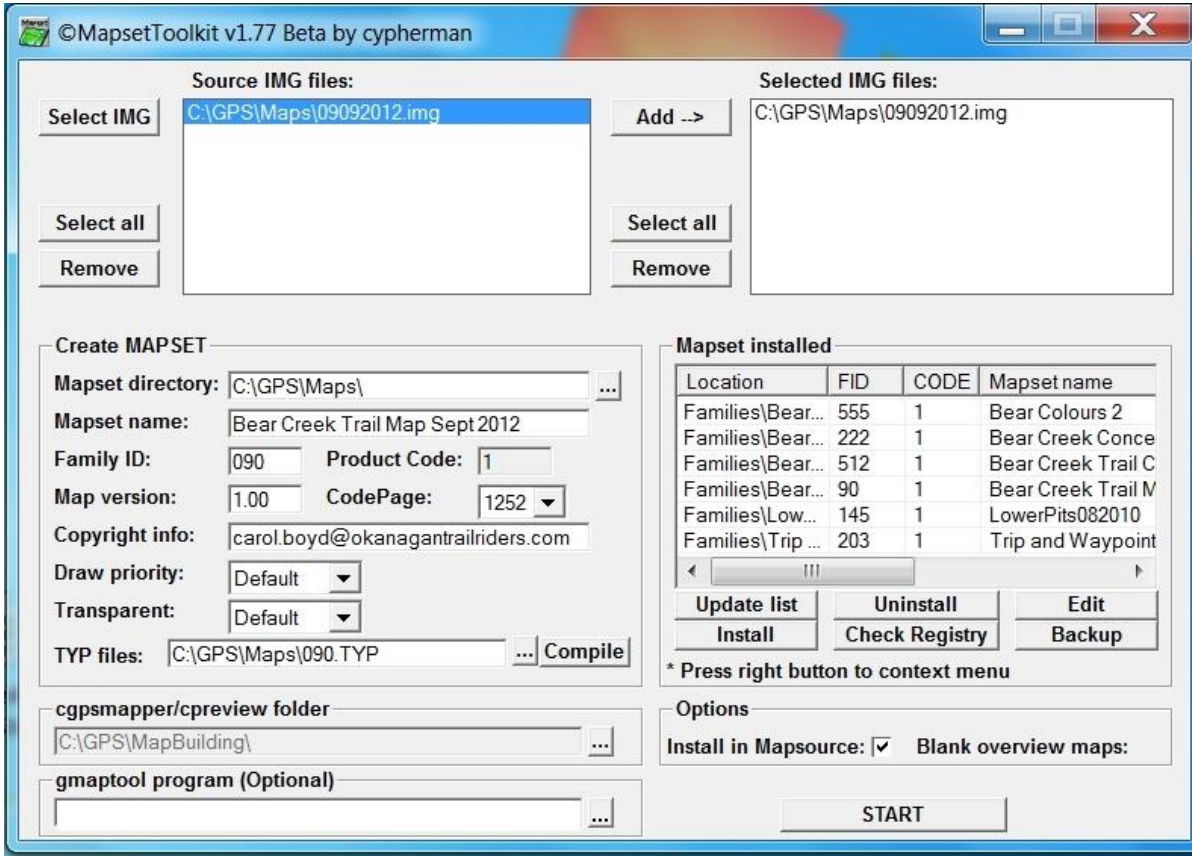
- Garmin Mapsource (included with your Garmin GPS unit)
- cGPSMapper (free)
- Mapset Tool Kit (free)

To get started:

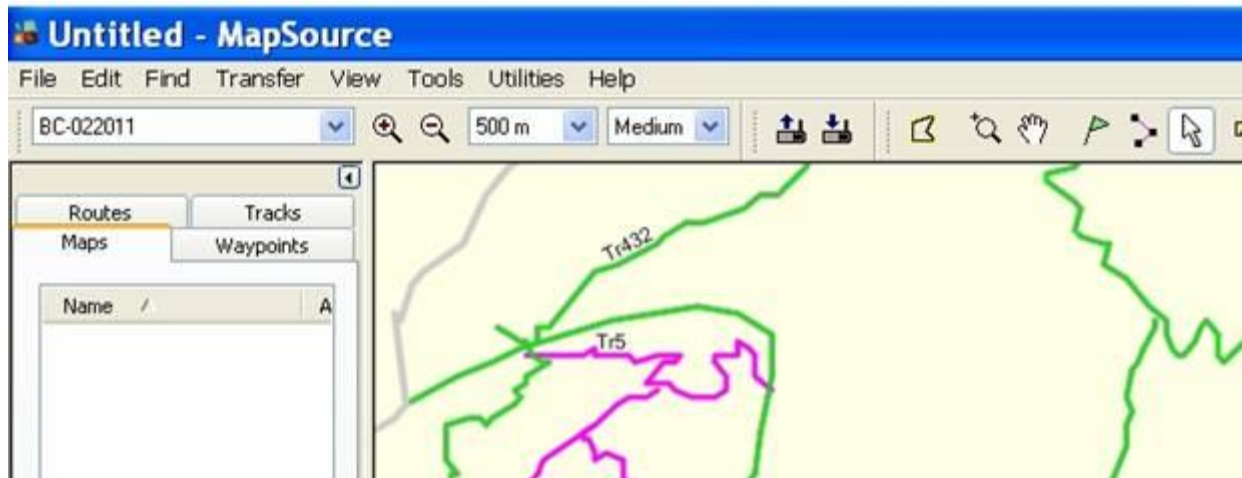
- 1) Create 2 directories on your computer called, for example: C:/GPS/Mapbuilding and C:/GPS/Maps
- 2) Save the 2 files (**by right clicking on them with the mouse in the attachments menu to left**) into the C:/GPS/Maps directory
[09092012.img](#)
[090.typ](#)
- 3) Download and install the following programs into your C:/GPS/Mapbuilding directory
cGPSMapper: <http://www.cgpsmapper.com/download2/cgpsmapperFree.zip>
(note- you'll need to click on the gpsmapper application file to extract it once it's downloaded or else you won't find the program in a later step

MapsetToolki: https://sites.google.com/site/cypherman1/MapSetToolKit_v1.77.zip?attredirects=0
- 4) Open Mapset Tool Kit and push the "Select IMG" button and browse to your Maps directory and press ok. You should then see a file named 09092012.img in the box. Select it by clicking your mouse on it and it should then become hi-lited. Press the add button to put it in the next box.
- 5) Next... fill in the rest of the settings like the pic below except:
 - change the mapset name to Bear Creek Trail Map Sept 2012
 - change family ID to 090
- 6) For TYP files browse to your C:/GPS/Maps directory and select the [090.typ](#) file.
- 7) Cgpsmapper folder can be found by browsing to your C:/GPS/Mapbuilding directory, [or wherever you installed it.](#)

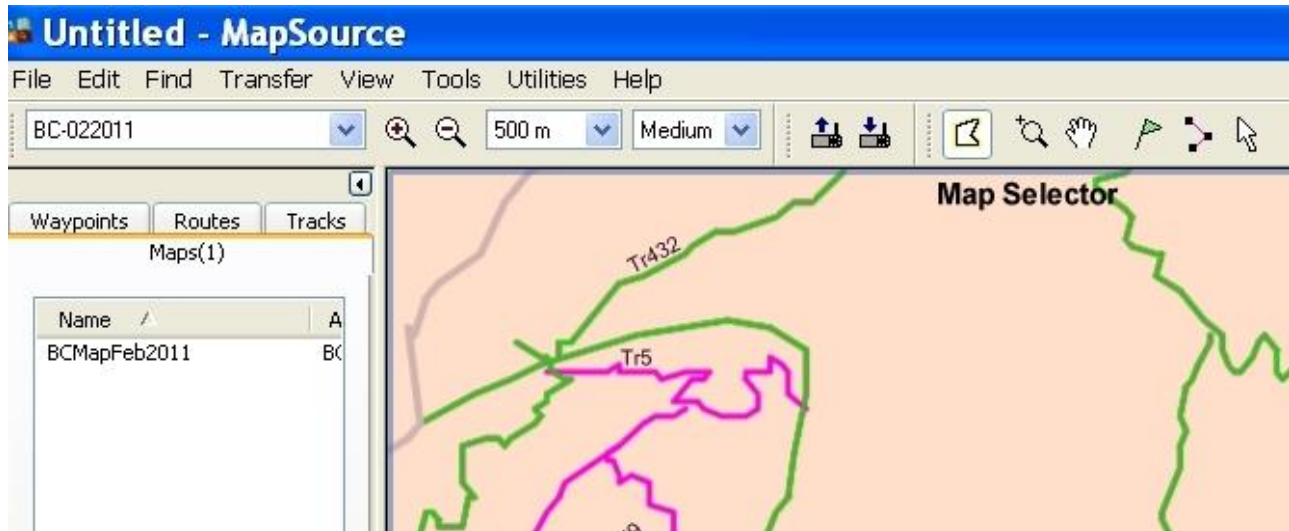
- 8) Make sure you tick the “Install in Mapsource” box off and then click Start. You may get a rename message for the family ID but can ignore that message



- 9) Close program and open Mapsource. Choose the Bear Creek Trail Map Sept 2012 (my example is named BC-022011) from your map drop down.



10) Click on the Map selector and then the map and it will turn pink and the map will load into your maps section for uploading.



11) Hook up GPS and Click on Transfer to device. That should up load the map to the GPS.

Goodluck, enjoy and let me know if you get stuck.

(note- I'm trying to find a way to make the file "self-Exec" so if any of you are computer super geeks, please help!)

Carol Boyd

carol.boyd@okanagantrailriders.com

www.okanagantrailriders.com

